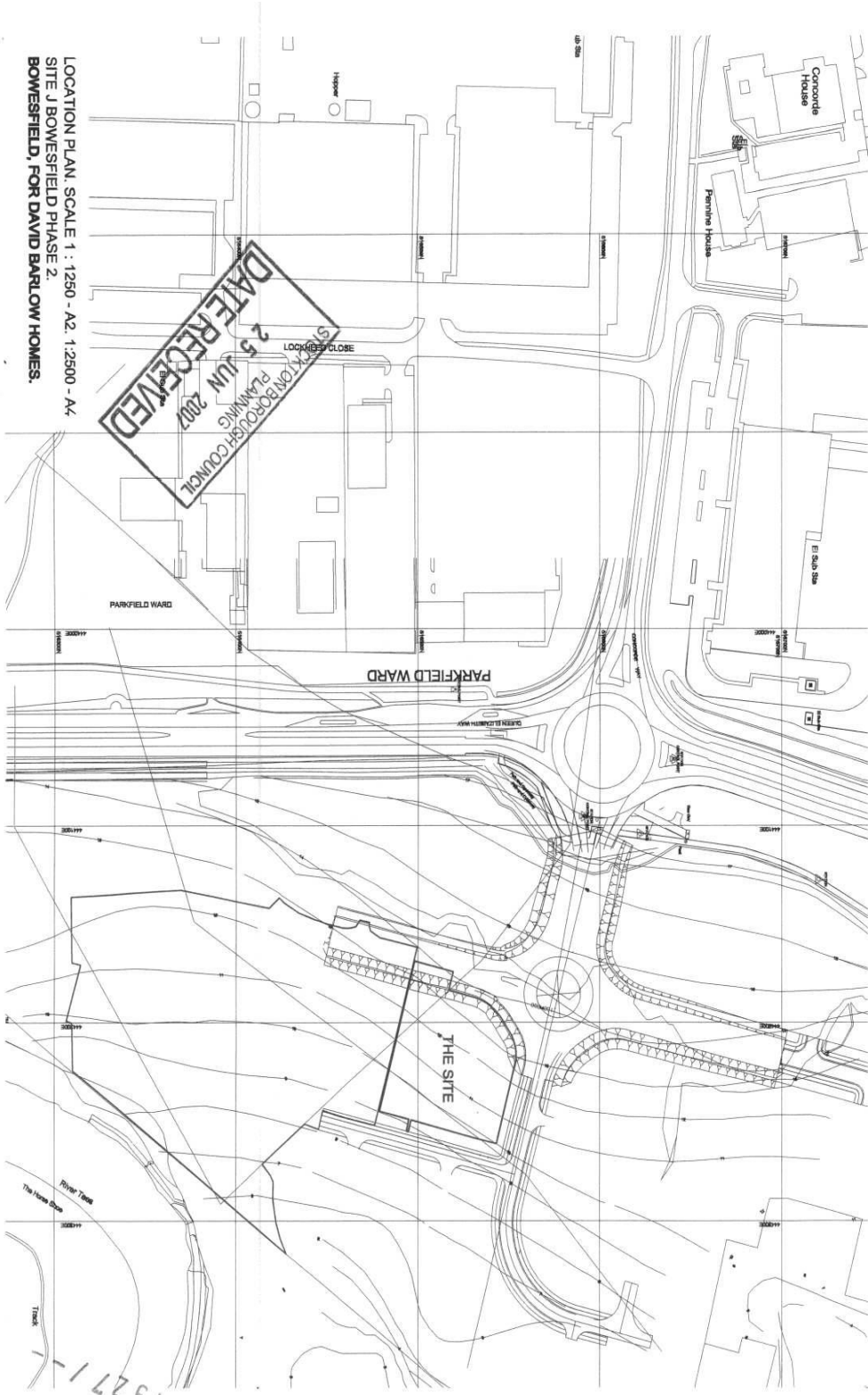


Appendix 1  
Site Location Plan  
07/1927/FUL

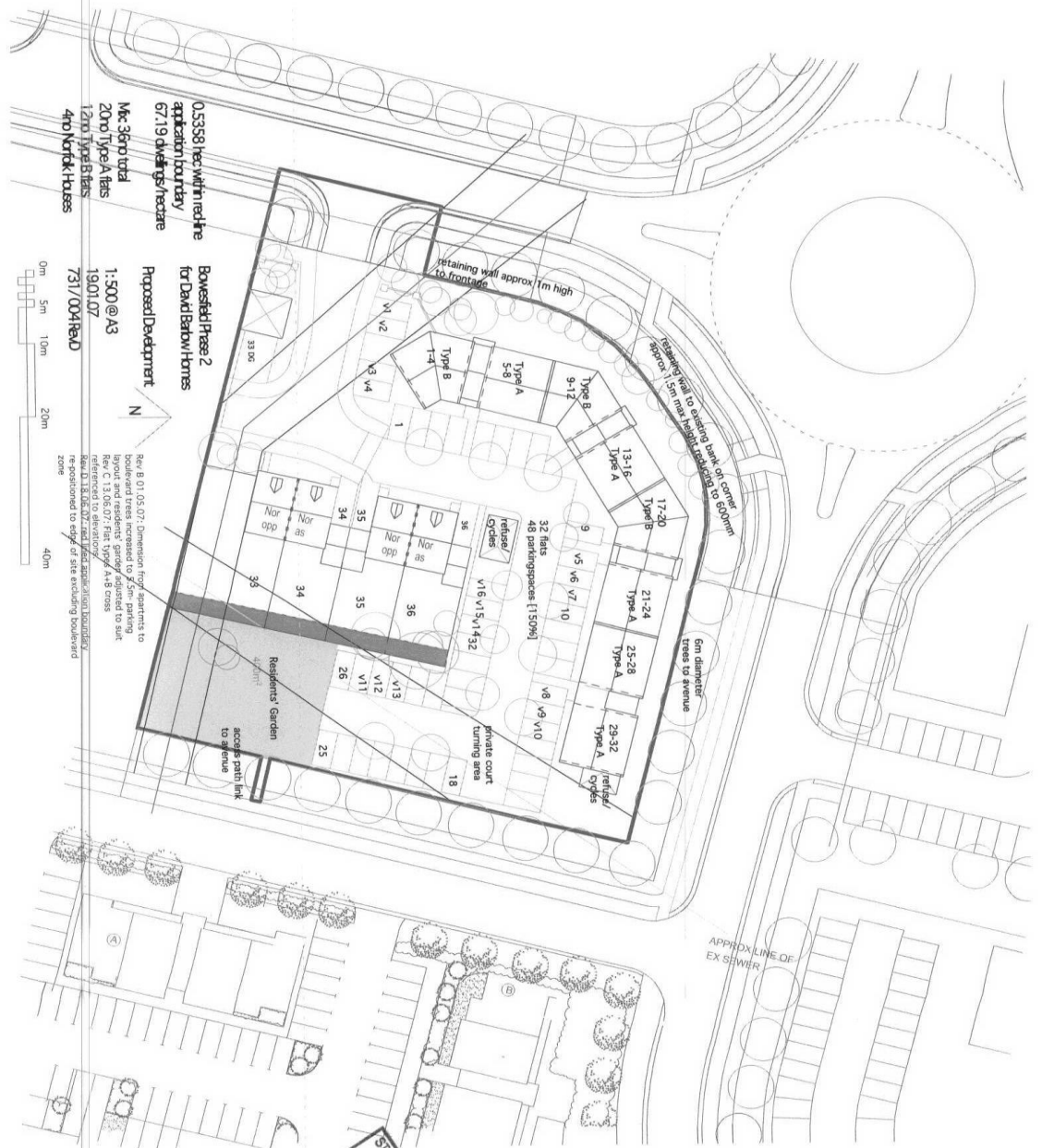


DATE RECEIVED  
25 JUN 2007  
SOUTH BOROUGH COUNCIL  
PLANNING

LOCATION PLAN, SCALE 1 : 1250 - A2, 1:2500 - A4  
SITE 1 BOWSFIELD PHASE 2,  
BOWSFIELD, FOR DAVID BARLOW HOMES.

SBC 0007 07 / 1927 / -

**Appendix 2  
Proposed Site Plan  
07/1927/FUL**



0.5358 hectares with the application boundary  
67.19 dwellings/hectare

**Mc-Simp total**  
20x0 Type A flats  
4x0 Norfolk Houses

**Proposed Development**  
1-500 @ A3  
19/01/07  
731/004 ROAD



**Bowersfield Phase 2**  
for David Barlow Homes

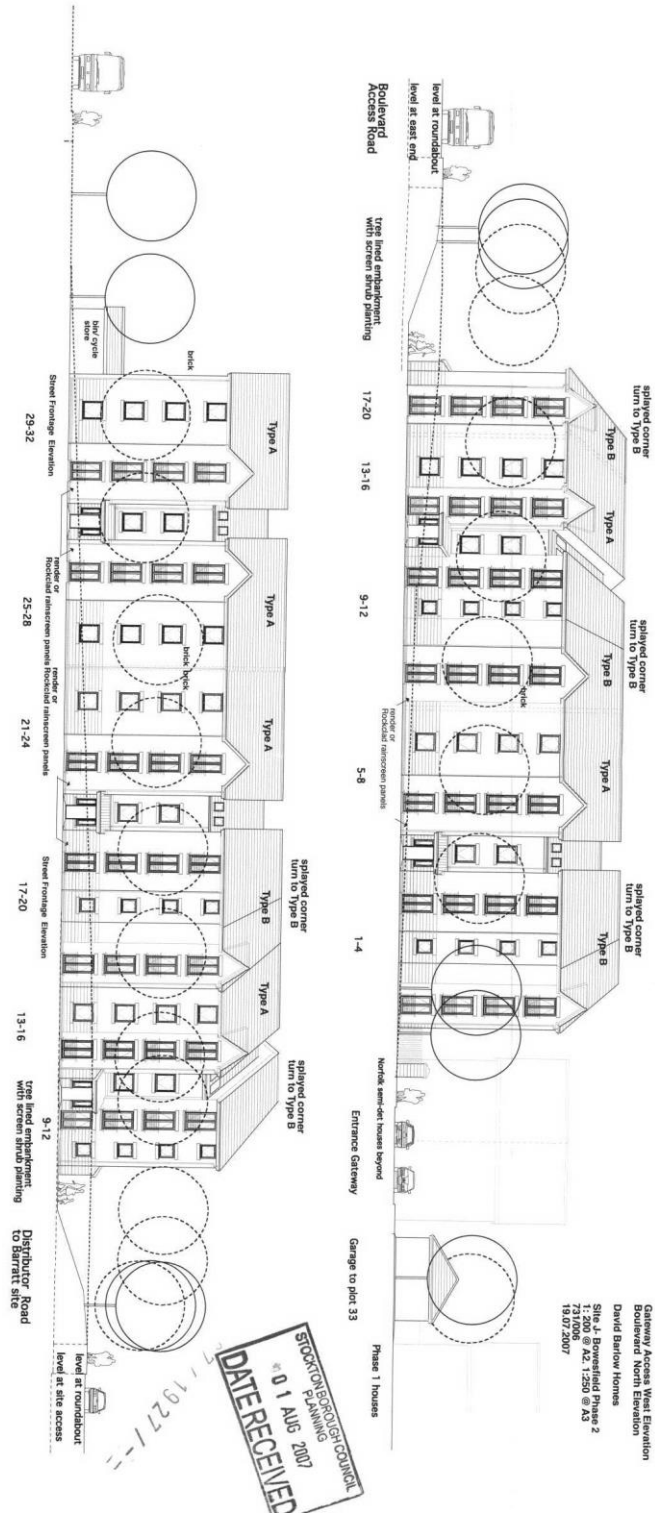
Rev. B 01/05/07: Dimension for apartments to  
boundary increased to 2.5m parking  
layout and residents garden adjusted to suit  
Rev. C 13/06/07: Flat Type A-18 cross  
section 18.06.07 and flat application boundary  
re-positioned to edge of site enclosing boundary  
zone

STOCKTON-ON-THE-TWEED COUNCIL  
PLANNING  
25 JUN 2007  
DATE RECEIVED

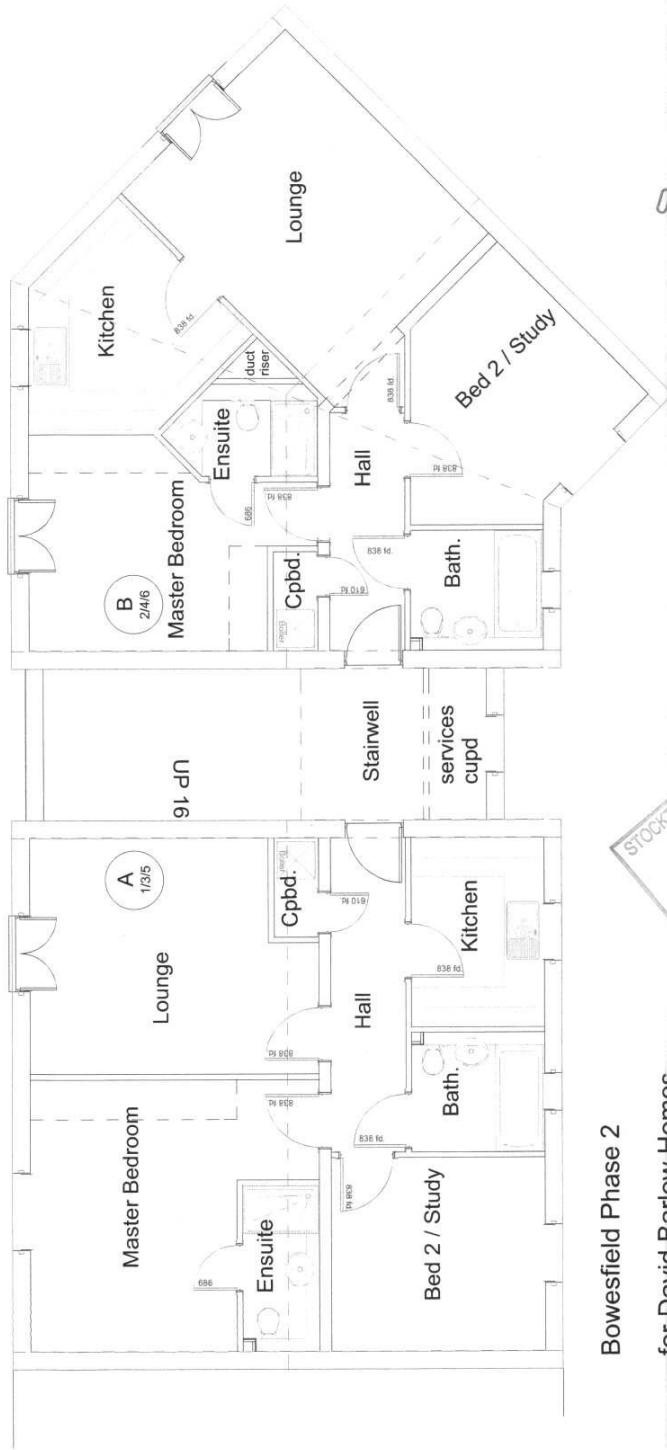
SBC 0004

07/1927/---

Appendix 3  
Apartment Elevations  
07/1927/FUL



**Appendix 4  
Apartment Floor Plan  
07/1927/FUL**



SBC 0000

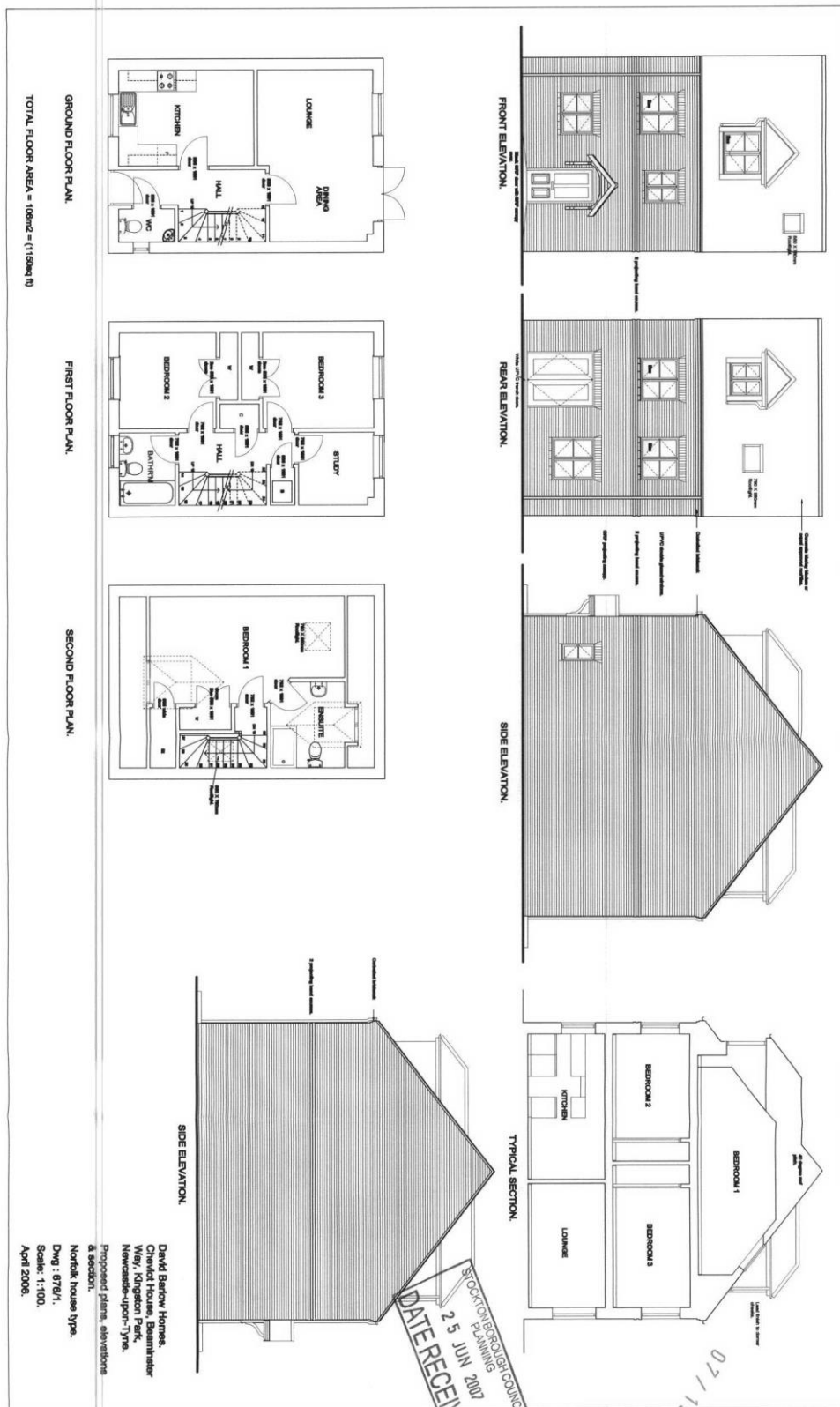
07 / 1927 / - -



Bowesfield Phase 2  
for David Barlow Homes

Proposed generic flat plan  
TypeA 65.8sqm: TypeB 65.9sqm  
1:100  
17.01.07  
SK004

Proposed House Type  
07/1927/FUL



GROUND FLOOR PLAN.  
TOTAL FLOOR AREA = 108m<sup>2</sup> = (1158sq ft)

FIRST FLOOR PLAN.

SECOND FLOOR PLAN.

David Barlow Homes,  
Cherold House, Beaumaris  
Way, Kingsdon Park,  
Newcastle-upon-Tyne.  
Proposed plans, elevations  
& section.  
North house type.  
Dwg: 07/01.  
Scale: 1:100.  
April 2006.

STOCKTON-ON-THEESEA DISTRICT COUNCIL  
PLANNING  
25 JUN 2007  
DATE RECEIVED

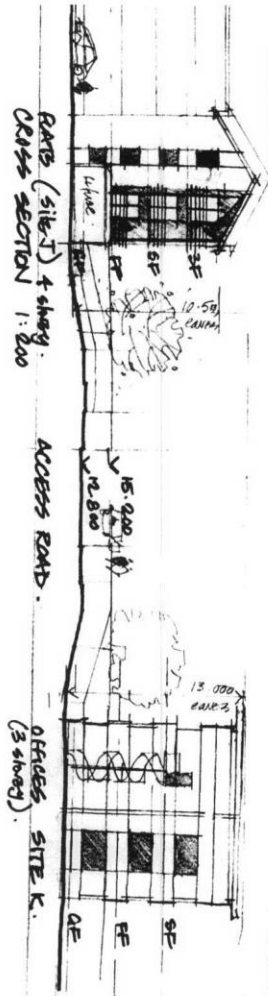
07/1927/-

SBC 0001

Appendix 6  
Elevations and Sections  
07/1927/FUL

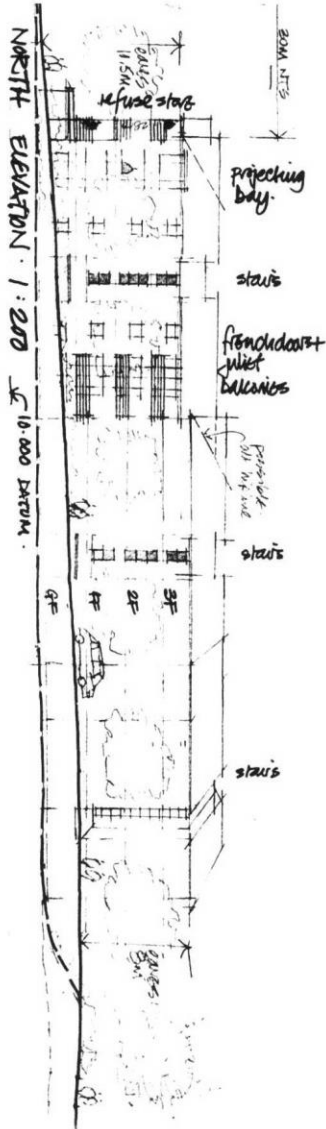
1/ SK 006  
3 2007

David Ballou draws  
Site J  
Bonesfield 2  
1:200 sections/elev.



SBC 0006

07/1927/---



STOCKPORT EDUCATION BOARD  
25 JUN 2007  
DATE RECEIVED